



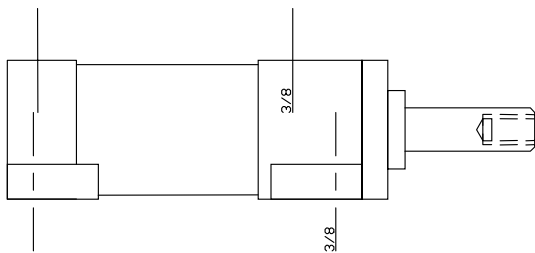
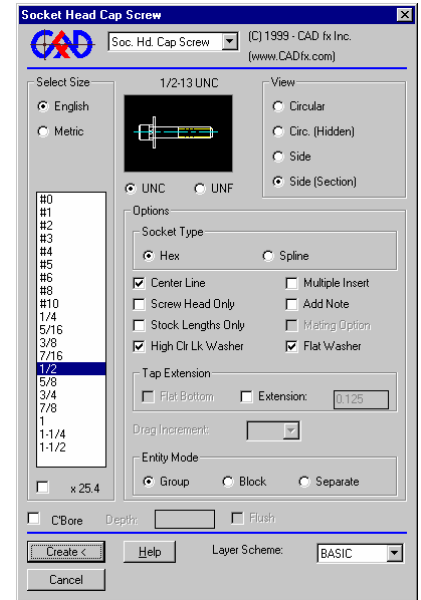
# Mechanical Power Tools 4.5

CAD fx Inc., G-4488 West Bristol Rd., Flint, MI 48507  
 Phone: (877) 741-2175, Fax: (810) 732-4369  
 www.CADfx.com

autodesk  
 authorized developer

**Mechanical Power Tools is a tooling add-on software package which includes holes, fasteners, etc., along with datum dimensioning, hole charting, mechanical utilities, and much more.**

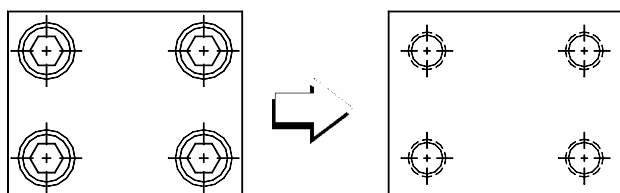
- Efficient, easy to use dialog interface makes setup and creation of fasteners a snap.
- Parametrically generate all fasteners, holes and shapes. Eliminate the need for block libraries while improving flexibility and efficiency.
- Global settings can be configured to reduce setup time for each fastener by ensuring that the most common settings come up by default.
- Create and maintain multiple layer "schemes" for different customers.
- Block Manager supplies you with a powerful organizational tool for the management of your block libraries.
- Enhanced Leader automatically creates the type of leader and callout based on the object you select.
- Compatible with AutoCAD 2000i through AutoCAD 2005
- Complete AISC standard structural shapes are included.
- Mating Piece Option automatically calculates the appropriate engagement of the selected fastener.
- Power Edit allows the user to pick an existing hole or fastener, restoring all settings for quick editing. This includes changing size, fastener or feature types and settings.
- Power Swap allows for swapping out any number of fasteners to a tapped hole or counter bore hole equivalent. Save time when converting from design to detail drawings.
- A number of dimensioning utilities are also included to enhance and simplify the dimensioning process. One of the most powerful dimensioning utilities offered is the Datum Dimensioning Program. It provides the user with exceptional flexibility and control when generating datum dimensions.
- Includes a powerful hole charting program. Just select the holes and the chart is generated. Move or delete any holes and the chart updates automatically.



Example of the JIC Cylinder, one of the many Bonus Utilities

ID	DESCRIPTION	X	Y	DEPTH
1	7/16-14 UNC TAPPED HOLE (FAR SIDE)	2.5642	1.0062	THRU
2	7/16-14 UNC TAPPED HOLE (FAR SIDE)	2.5642	2.0062	THRU
3	7/16-14 UNC TAPPED HOLE (FAR SIDE)	2.5642	3.0062	THRU
4	7/16-14 UNC TAPPED HOLE (FAR SIDE)	2.5642	4.0062	THRU
5	C'SINK FDR 3/8 FLAT HD. SCR. (FAR SIDE)	5.3577	1.0370	THRU
6	C'SINK FDR 3/8 FLAT HD. SCR. (FAR SIDE)	5.3577	2.0381	THRU
7	C'SINK FDR 3/8 FLAT HD. SCR. (FAR SIDE)	5.3385	3.0392	THRU
8	C'SINK FDR 3/8 FLAT HD. SCR. (FAR SIDE)	5.3385	4.0403	THRU
9	0.438 DIA. (FAR SIDE)	3.9128	1.0178	THRU
10	0.438 DIA. (FAR SIDE)	3.9128	2.0189	THRU
11	0.5625 DIA. THRU & 0.8125 C'BORE (FAR SIDE)	1.1770	0.9870	THRU
12	0.5625 DIA. THRU & 0.8125 C'BORE (FAR SIDE)	1.1770	1.9870	THRU
13	0.5625 DIA. THRU & 0.8125 C'BORE (FAR SIDE)	1.1770	2.9870	THRU
14	0.5625 DIA. THRU & 0.8125 C'BORE (FAR SIDE)	1.1770	3.9870	THRU
15	0.563 DIA. (FAR SIDE)	3.9128	3.0200	THRU
16	0.563 DIA. (FAR SIDE)	3.9128	4.0211	THRU

Hole chart created from the holes below.



Go from Design Phase to Detail Phase with a single command!

